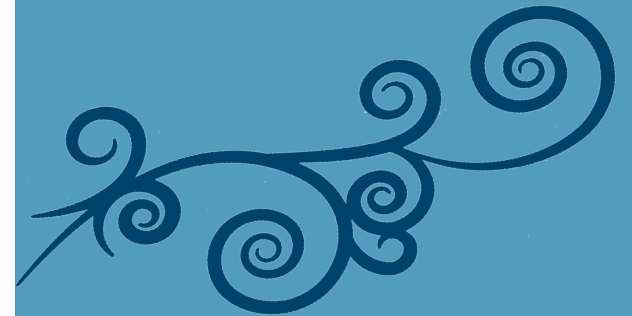


Ninth
NORTH AMERICAN CONFERENCE
for
**LEADERS IN DIOCESES &
RELIGIOUS INSTITUTES**

April 15-17, 2012

CRITICAL PERSONNEL ISSUES

Resiliency in Leadership



Sponsored by

SAINT LUKE INSTITUTE
Silver Spring, MD

SOUTHDOWN INSTITUTE
Aurora, ON Canada

LOCATION

Washington, D.C. area
April 15-17, 2012

Greenbelt Marriott Hotel
Greenbelt, MD 20770

Transportation options:

- Baltimore-Washington International & Reagan National airports
- Amtrak
- Automobile (immediately adjacent to I-495)

COST

The cost per person is \$310 (U.S.). This includes:

- All workshops and events
- Lunch and dinner
- Conference materials

Need-based scholarships are available upon request.

Please contact the Marriott at 888-236-2427 to reserve a room at the special 2012 CPI-Saint Luke conference rate of \$129 per night (rate available through March 25, 2012).

Space is limited, so please register as soon as possible. Conference fee refunds, less a \$50 processing fee, will be made upon request through Feb. 22, 2012.

SPONSORS



SAINT LUKE INSTITUTE



with participation by *GuestHouse*

For more information:
301-422-5499 • education@sli.org

9th North American Conference on Critical Personnel Issues

SAINT LUKE INSTITUTE

Attn: Education Department

8901 New Hampshire Avenue

Silver Spring, MD 20910

WORKSHOPS

Resiliency in ministry is important for those in church leadership, and in the religious and priests who serve the People of God. Church leaders must balance their own need for resiliency and the needs of the personnel in their dioceses and religious institutes.

Participants in this conference will gain insight on critical mental health, placement and organizational concerns facing leaders today, as well as strategies to support one's own wellness and spiritual health.

A facilitated open session forum will be offered for diocesan leaders and for leaders of religious institutes to exchange solutions for resiliency, problem solving and current issues facing Church leaders.

Workshop leaders include professionals from the staffs of Saint Luke Institute, Southdown Institute and Guest House.

WORKSHOP TOPICS

- Resiliency in Ministry
- Principles for Church Personnel Ministries
- Working with Personality Disorders
- The Challenge of Addictions
- Healthy Aging for Religious and Priests
- Internet Pornography – a New Pastoral Reality

Each topic will be presented twice to provide more opportunities for participants. Presentation materials will be provided to individuals when they register.

PRESENTERS INCLUDE

- Msgr. Edward J. Arsenault
- Sr. Miriam D. Ukeritis, CSJ, Ph.D.
- Emily Cash, Psy.D.
- Nancy Kluge, Ph.D.
- Sam Mikail, Ph.D.
- Eran Talitman, Ph.D.

SCHEDULE

SUNDAY

- 2:00 Registration opens
- 4:30 Welcome and Opening Prayer
- 5:30 Break/Registration continues
- 6:00 Supper
- 7:30 **CONCURRENT WORKSHOPS**
- 9:00 Social

MONDAY

- 7:45 Breakfast
- 9:00 Eucharistic Liturgy
- 10:00 **CONCURRENT WORKSHOPS**
- 11:30 Break/Lunch
- 1:30 **CONCURRENT WORKSHOPS**
- 3:00 Break
- 3:30 **CONCURRENT WORKSHOPS**
- 5:30 Evening Prayer
- 6:00 Supper
- 7:30 **DISCUSSION FORUM:**
Current Issues in Ministry
 - Religious Institutes
 - Dioceses
- 9:00 Social

TUESDAY

- 7:45 Breakfast
- 8:45 Morning Prayer
- 9:15 **CLOSING PRESENTATION:**
Current Issues and Concerns
- 11:15 Closing Liturgy
- 12:00 Lunch and Departure

9th North American Conference on Critical Personnel Issues

Yes! I/we will be attending the workshop on April 15-17, 2012.

Enclosed is full payment of \$310 (U.S.)

Please contact the Marriott to reserve a room; the conference rate is available until March 25, 2012.

Please make checks payable to
Saint Luke Institute
8901 New Hampshire Avenue
Silver Spring, MD 20903

Participant 1: Title, First Name, Last Name

Participant 1: Position

Telephone

Participant 2: Title, First Name, Last Name

Participant 2: Position

Telephone

(Arch)diocese or Religious Community Initials

Street Address

City

State/Province

Zip

Participant 1 Email

Participant 2 Email